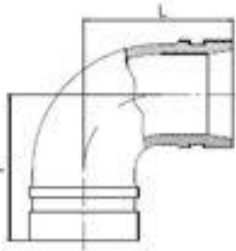


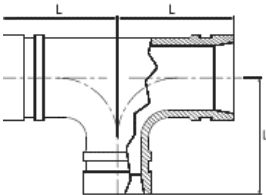
STANDARD 90° ELBOW

Steel Tube			Working pressure			Dimensions	Weight approx. (grs)
DN	Inches	Ext(mm)	Bar	Mpa	Psi	L(mm)	
25	1"	33.7	34.50	3.45	500	57	237
32	1 1/4"	42.4	34.50	3.45	500	70	414
40	1 1/2"	48.3	34.50	3.45	500	70	483
50	2"	60.3	34.50	3.45	500	83	652
65	2 1/2"	73.0	34.50	3.45	500	95	1100
65	3od	76.1	34.50	3.45	500	95	1153
80	3"	88.9	34.50	3.45	500	108	1607
100	4"	114.3	34.50	3.45	500	127	2661
125	5"	139.7	34.50	3.45	500	140	4091
150	6 1/2"O.D	165.1	34.50	3.45	500	165	5992
150	6"	168.3	34.50	3.45	500	165	6069
200	8"	219.1	34.50	3.45	500	197	11118
250	10	273.0	34.50	3.45	500	229	24580
300	12"	323.9	34	3.45	500	254	35523

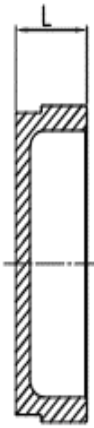
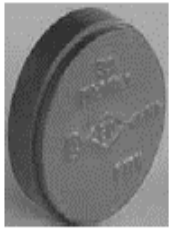


STANDARD REDUCING TEE STD

Medida steel tube			Working pressure			Dimensions	Weight approx. (grs)
DN	Inches	Ext(mm)	Bar	Mpa	Psi	L(mm)	
50x25	2"x1"	60.3x33.7	34.40	3.45	500	70	757
50x40	2"x1 1/2"	60.3x48.3	34.50	3.45	500	70	794
65x40	2 1/2"x1 1/2"	76.1x48.3	34.50	3.45	500	76	1332
65x50	2 1/2"x2"	76.1x60.3	34.50	3.45	500	76	1356
80x25	3"x1"	88.9x33.7	34.50	3.45	500	108	2388
80x50	3"x2"	88.9x60.3	34.50	3.45	500	86	1679
80x65	3"x2 1/2"	88.9x76.1	34.50	3.45	500	86	1846
100x40	4"x1 1/2"	114.3x48.3	34.50	3.45	500	101	2670
100x50	4"x2"	114.3x60.3	34.50	3.45	500	101	2685
100x65	4"x2 1/2"	114.3x76.1	34.50	3.45	500	101	2854
100x80	4"x3"	114.3x88.9	34.50	3.45	500	101	2858
125x100	5"x4"	139.7x114.3	34.50	3.45	500	124	4882
150x50	6 1/2"O.Dx2"	165.1x60.3	34.50	3.45	500	140	6293
150x100	6 1/2"O.Dx2"	165.1x114.3	34.50	3.45	500	140	6562
150x50	6"x2"	168.3x60.3	34.50	3.45	500	140	6634
150x80	6"x3"	168.3x88.9	34.50	3.45	500	140	6825
150x100	6"x4"	168.3x114.3	34.50	3.45	500	140	6904



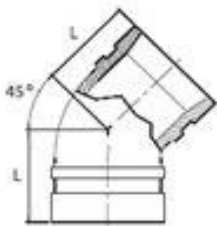
CAP



Steel Tube			Working pressure			Dimensions	Weight approx. (grs)
DN	Inches	Ext(mm)	Bar	Mpa	Psi	L(mm)	
25	1"	33.7	34.50	3.45	500	23	89
32	1 1/4"	42.4	34.50	3.45	500	24	120
40	1 1/2"	48.3	34.50	3.45	500	23	158
50	2"	60.3	34.50	3.45	500	23	220
65	2 1/2"	76.1	34.50	3.45	500	24	39
80	3"	88.9	34.50	3.45	500	26	476
100	4"	114.3	34.50	3.45	500	26	935
125	5"	139.7	34.50	3.45	500	27	1409
150	6 1/2" O.D	165.1	20.70	2.07	300	27	1596
150	6"	168.3	20.70	2.07	300	25	2078
200	8"	219.1	20.70	2.07	300	30	3887
250	10"	273.0	20.70	2.07	300	30	6976
300	12"	323.9	20.70	2.07	300	32	9401

STANDARD 45° ELBOW

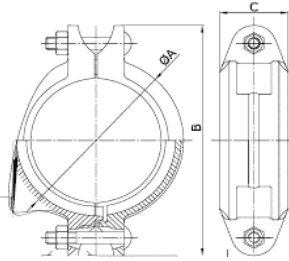
Steel Tube			Working pressure			Dimensions	Weight approx. (grs)
DN	Inches	Ext(mm)	Psi	Mpa	Bar	L(mm)	
25	1"	33.7	34.50	3.45	500	45	204
32	1 1/4"	42.4	34.50	3.45	500	45	304
40	1 1/2"	48.3	34.50	3.45	500	45	351
50	2"	60.3	34.50	3.45	500	51	481
65	3 O.D	76.1	34.50	3.45	500	57	825
80	3"	88.9	34.50	3.45	500	64	1139
100	4"	114.3	34.50	3.45	500	76	1887
125	5"	139.7	34.50	3.45	500	83	2898
150	6 1/2" O.D	165.1	34.50	3.45	500	89	3889
150	6"	168.3	34.50	3.45	500	89	3589
200	8"	219.1	34.50	3.45	500	108	6817
250	10"	273.0	34.50	3.45	500	121	14760
300	12"	323.9	34.50	3.45	500	133	21675



STANDARD RIGID COUPLING -1G5



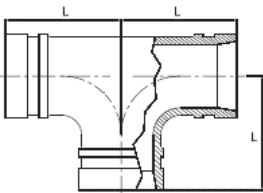
Steel Tube			Working pressure			Dimensions			Tightening (nut x screw) nr- xL (mm)	Weight approx. (grs)
DN	Inches	ext (mm)	Bar	Mpa	PSI	A (mm)	B (mm)	C (mm)		
65	30D	76.1	20.70	2.07	300	101	140	45	2-3/8" X 55	839
80	3"	88.9	20.70	2.07	300	115	160	45	2-3/8" X 55	1014
100	4"	114.3	20.70	2.07	300	140	187	50	2-1/2" X 70	1520
125	5"	139.7	20.70	2.07	300	168	225	50	2-1/2" X 75	1901
150	6-1/2"0.d	165.1	20.70	2.07	300	196	250	50	2-1/2" X 75	2270
150	6"	168.3	20.70	2.07	300	196	250	50	2-1/2" X 75	2252
200	8"	219.1	20.70	2.07	300	255	322	58	2-2/8" x 85	3832
250	10"	273.0	20.70	2.07	300	318	410	63	2-3/4" x 120	7790



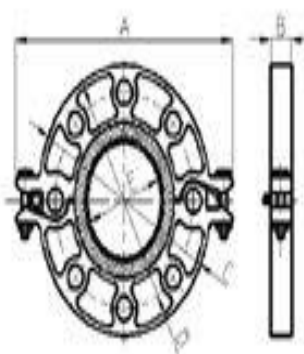
STANDARD EQUAL TEE



Steel Tube			Working pressure			Dimensions L(mm)	Weight approx. (grs)
Inches	DN	Ext(mm)	Psi	Mpa	Bar		
1	25	33.7	300	2.07	20.00	57	356
1 1/4	32	42.4	300	2.07	20.00	70	63
1 1/2	32	42.4	300	2.07	20.00	70	722
2	50	60.3	300	2.07	20.00	82.5	990
2 1/2	65	73.0	300	2.07	20.00	95	1727
30D	65	76.1	300	2.07	20.00	95	1740
3	80	88.9	300	2.07	20.00	108	2415
4	100	114.3	300	2.07	20.00	127	4012
5	125	141.0	300	2.07	20.00	140	5975
6 1/20D	150	165.1	300	2.07	20.00	165	7810
6"	150	168.3	300	2.07	20.00	165	8728
8	200	219.1	300	2.07	20.00	197	15544
10	250	273.0	300	2.07	20.00	229	34090
12	300	323.9	300	2.07	20.00	254	47366
14	350	377.0	300	2.07	20.00	279	57000
16	400	426.0	300	2.07	20.00	305	61000



FLANGE BS STANDARD



Steel Tube			Working pressure			Dimensions					Tightening		Weight
Inches	DN	Ext(mm)	Psi	Mpa	Bar	A	B	C	D	E	mm (bolt circle)	mm	Appx (grs)
Inches	DN	Ext(mm)	Psi	Mpa	Bar	A	B	C	D	E	mm		(grs)
1 1/2	48	48.3	300	2.07	20.00	195	24	150	110	45.4	2-M10X50	4-M16	1200
2	50	60.3	300	2.07	20.00	220	24	165	125	57.5	2-M10X50	4-M16	1400
2 1/2	60	73.0	300	2.07	20.00	235	24	182	145	69.8	2-M10X50	4-M16	1900
30D	65	76.1	300	2.07	20.00	235	24	185	145	72.7	2-M10X50	4-M16	2000
3	80	88.9	300	2.07	20.00	252	24	200	160	85.5	2-M10X50	4-M16	2000
4	100	114.3	300	2.07	20.00	280	25.5	229	180	110.5	2-M12X55	8-M16	3800
5	125	141.0	300	2.07	20.00	320	25.5	254	210	135.5	2-M12X65	8-M16	4100
6-1/20D	150	165.1	300	2.07	20.00	346	25.5	280	240	160.8	2-M12X65	8-M20	4700
6"	165	168.3	300	2.07	20.00	346	25.5	280	240	164.3	2-M12X65	8-M20	4500
8	200	219.1	300	2.07	20.00	414.3	30	341.4	295	214.9	2-3/8X70	12-M20	9000
10	250	273.0	300	2.07	20.00	481.2	30.3	405.6	355	268.9	2-3/8X70	12-M24	1100